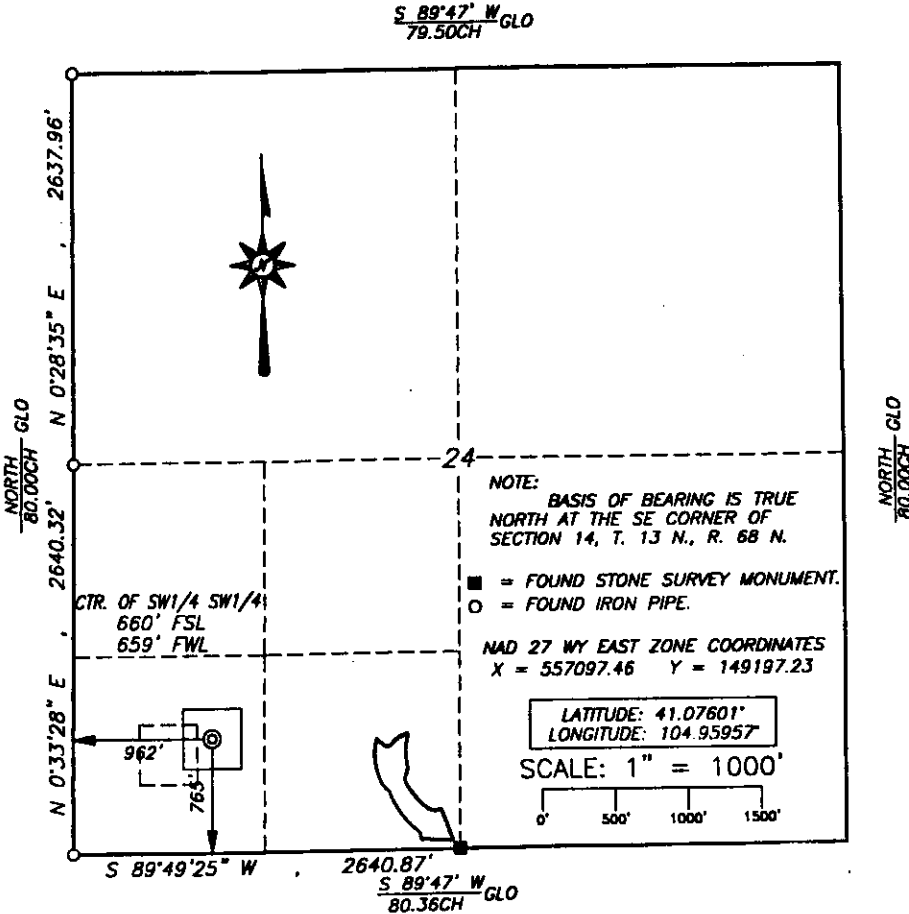


State of Wyoming Corner Record

(In compliance with the *CORNER PERPETUATION AND FILING ACT*, Wyoming Statutes, 1977, Section 36-11-101, et. seq., and the Rules and Regulations of the Board of Registration for Professional Engineers and Professional Land Surveyors)

Reverse side of this form may be used if more space is needed.

Record of original survey and citation of source of historical information (if corner is lost or obliterated). Description of corner monumentation evidence found and/or monument and accessories established to perpetuate the location of this corner. Sketch of relative location of monument, accessories, and reference points with course and distance to adjacent corner(s) (if determined in this survey). Method and rationale for reestablishment of lost or obliterated corner.



FOUND: GRANITE STONE 6" X 6" X 6" HIGH WITH 1/4 ON NORTH FACE. IRON PIPE ALONGSIDE.

SET: NOTHING.

RECORDED 5/05/2003 AT 4:35 PM REC# 351325 BK# 1723 PG# 741
DEBRA K. LATHROP, CLERK OF LARAMIE COUNTY, WY PAGE 1 OF 1

Date of Field Work: OCT. 22, 2002 Office Reference: JOB # 92-02

CROSS INDEX DIAGRAM

Firm/Agency, Address

This corner record was prepared by me or under my direction and supervision.

SEAL & SIGNATURE

1	2	3	4	5	6	7	8	9	10	11	12	13	14	15	16	17	18	19	20	21	22	23	24		
A																								A	
B	6																							B	
C		5																						C	
D			4																					D	
E				3																				E	
F					2																			F	
G	7																							G	
H		8																						H	
I			9																					I	
J				10																				J	
K					11																			K	
L						12																		L	
M	13																							M	
N		14																						N	
O			15																					O	
P				16																				P	
Q					17																			Q	
R						18																		R	
S							19																	S	
T								20																T	
U									21															U	
V										22														V	
W											23													W	
X												24												X	
Y													25											Y	
Z														26										Z	
AA															27									AA	
AB																28								AB	
AC																	29							AC	
AD																		30						AD	
AE																			31					AE	
AF																				32				AF	
AG																					33			AG	
AH																						34		AH	
AI																							35	AI	
AJ																								36	AJ
AK																									AK

SIEK SURVEYING SERVICE
P.O. Box 1765
CASPER
WY 82602
Telephone Number: (307)266-6829



Corner Name: S/A Section: 24 T 13 R 68: 6th P.M. Cross-Index No.: R-23
SBRPEPLS/PLSW: March 1994 LARAMIE COUNTY, WY